

Notts News

Newsletter of the Nottinghamshire Chess Association

2005-06 No. 14 10 December 2005
<http://www.nottschess.org/> nottsnews@nottschess.org

Introduction

It was bound to happen sooner or later, and I suppose there was a certain inevitability about omitting the email attachment for No. 13 last week. Thanks to everyone who pointed out the error.

Two more errata: the ever-watchful Neil Graham has pointed out that J. Emanuel of University has been erroneously listed with a grade of 128 in the last few results; his correct grade is 164. Also, Long Eaton's Norman Davies has been listed as ungraded throughout the season, whereas his grade is in fact 104. These errors have been corrected on the web site.

This is another lengthy issue – sometimes it's hard to keep up with all the activity. I've held this issue back for a day to sneak in the result of West Nottingham's first round match in the National Club Championship (I'm writing this before the match is played). I also have the space to include some actual chess – if you have any interesting games, combinations, endgames, blunders etc., send them along and I'll try to fit them in..

County U125 Championship: Notts A – Derbys

Derek Cronshaw

The U125 A team moved smoothly into the semi-final of the MCCU championship, beating a Derbyshire team which had struggled for players 11-5, losing only two games. Notts' bottom 9 boards amassed 8½ points and the top boards more than held their own. Well done everybody!

The semi-final will be on 28 January vs. Staffordshire. Please reserve the date.

Nottinghamshire U125 A – Derbyshire U125 3 December 2005

Board	Grade	Grade		Grade	
1	M. Nailard	121	½-½	D. Hoddy	124
2	A. Carlton	121	½-½	R. Woods	110
3	D. Ince	119	½-½	P. O'Flanagan	114
4	P. Burley	115	½-½	J. Kelsall	110
5	M. Harper	107	1-0	L. Alldread	104
6	D. Griffiths	106	0-1	R. Harrison	97
7	L. Bowen	106	½-½	G. Pace	96
8	T. Thurgood	105	1-0	P. Sheldon	89
9	I. Fillingham	103	0-1	H. Bradbury	88
10	D. Cronshaw	105	1-0	H. Loomes	87
11	J. Yang	104	1-0	P. Ellis	85
12	D. Lin	104	1-0	M. Orridge	84
13	L. Darby	97	1-0	P. Smith	78
14	P. Smith	87	1-0	H. Ratner	76
15	D. Blampied	66	1-0	D. Jeffrey	-
16	A. Alfred	-	½-½	J. Morrell	-

11-5

County U125 Championship: Notts A – Derbys

Neil Graham

Notts B lost to Leicestershire by 10 boards to 6 on Saturday. Despite being outgraded throughout Notts held their local rivals on the top ten boards but could only score one point in the lower order. Leicestershire took an early 5-2 lead and although the score was pegged back to 5-4, Leicester then made a match-winning surge. This means that Notts B, who had to win the match, are eliminated.

Final scores:

	P	W	D	L	Pts
Notts A	3	2	1	0	5
Leics	3	2	0	1	4
Notts B	3	1	1	1	3
Derbys	3	0	0	3	0

The B team introduced a number of younger players who performed exceptionally in addition to plenty of experienced players. No games were defaulted at all.

The East Midlands matches were affected by the inclusion of a player who clearly was ineligible for this competition; his strength was unknown before the season and it is unfortunate that his results were instrumental in deciding the matches in which he played. The results of the two Nottinghamshire sides has shown that the county can compete at this level and it is hoped that the A team can now progress into the national stages.

Nottinghamshire U125 B – Leicestershire U125 3 December 2005

Board	Grade	Grade		Grade	
1	Bob Taylor	124	0-1	Steve Wylie	123
2	Benny Lim	120	0-1	Peter Harrison	124
3	Alan Robinson	114	½-½	Lewis Turner	124
4	Anjali Lakhani	101	0-1	John Manger	124
5	Ray Sayer	109	1-0	Cyril Johnson	119
6	Alan Morrey	108	½-½	Chris Graves	119
7	Richard Myers	107	1-0	Anthony Robinson	117
8	Norman Davies	104	1-0	Stephen Smith	117
9	Patrick Allen	102	½-½	Roy Toon	110
10	Graham Gibson	99	½-½	David Ward	109
11	Amar Mann	95	0-1	Lea Adlard	107
12	Barry Redburn	95	0-1	Tom Pinckard	107
13	Chris Heining	94	0-1	Andy Johnson	101
14	Paul Todd	85	0-1	Graham Hewitt	100
15	Hamzah Ali	75	1-0	Robert Stone	103
16	Edwin Justice	76	0-1	Paul Clark	90

6-10

4NCL: Rounds 3 and 4

There were mixed fortunes for the two Notts teams in the latest 4NCL weekend. Notts 1 won both of their matches, moving them to within 1½ points of the promotion places. Notts 2, however, lost both matches.

Nottinghamshire 1 – Cavendish

1	Barnes, Michael H.	2200	½ – ½	Harman, Kenneth B.	2160
2	Richmond, Robert J.	2190	1 – 0	Scrimgour, Alan.	2120
3	Mercs, Peter J.	2110	0 – 1	Crichton, Martin.	2035
4	Halfpenny, Glenn	2125	½ – ½	Hamblin, David J.	2025
5	Truman, Richard G.	2070	1 – 0	Tart, Peter	2015
6	Burke, Steven J.	2065	½ – ½	Chapman, Timothy J.	1855
3½–2½					

Nottinghamshire 2 – Warwickshire Select 2

1	Webster, Richard J.	2020	½ – ½	Baruch, Andrew J. D.	2180
2	Thompson, Brian	2030	½ – ½	Hunt, Malcolm A.	2105
3	Harrison, John	2015	0 – 1	Emanuel, John	2070
4	Graham, Neil	1930	½ – ½	Cooper, David M.	2080
5	Wright, Antony J.	1920	1 – 0	Malik, Dani	1955
6	Lavelle, Terry W.	1815	0 – 1	Malik, Kaiser	1935
2½–3½					

FCA Solutions – Nottinghamshire 1

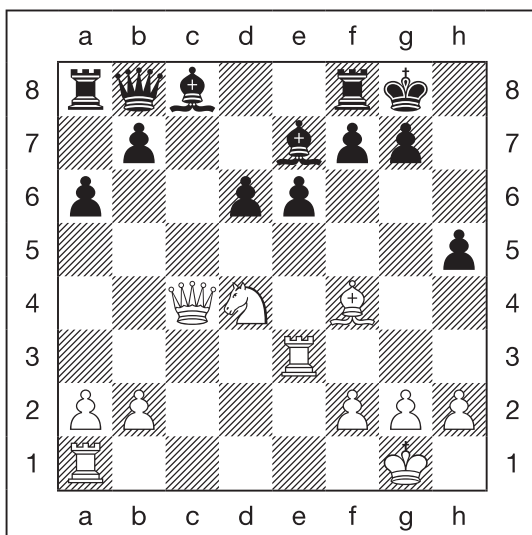
1	Elwin, Adrian G.	2070	0 – 1	Barnes, Michael H.	2200
2	Kendall, Paul S. N.	2075	1 – 0	Richmond, Robert J.	2190
3	Valentine, Brian J.	1990	½ – ½	Mercs, Peter J.	2110
4	Matthews, Adrian	1995	0 – 1	Walker, Andrew N.	2095
5	Shaw, John S.	1935	½ – ½	Truman, Richard G.	2070
6	Billsberry, Jon	1800	0 – 1	Lakhani, Kishan	2010
3½–2½					

Cavendish – Nottinghamshire 2

1	Harman, Kenneth B.	2160	1 – 0	Webster, Richard J.	2020
2	Hamblin, David J.	2025	½ – ½	Burke, Steven J.	2065
3	Crichton, Martin	2035	½ – ½	Harrison, John	2015
4	Tart, Peter	2015	1 – 0	Thompson, Brian	2030
5	Chapman, Timothy J.	1855	1 – 0	Wright, Antony J.	1920
6	Upham, John E.	1820	½ – ½	Lakhani, Anjali	1755
3½–2½					

Andrew Walker sends the end of his game against FCA solutions.

'In this position:



I had sacrificed a couple of pawns for somewhat dubious compensation and now played the obvious 1 Nf5, expecting 1 ... exf5 2 Rxe7 Be6 3 Qb4 b5 4 Bxd6, winning back one of the pawns, making the other a useless doubled pawn, and hoping that the opposite-coloured bishops and Black's weakened kingside pawns would give me the advantage. But Black blundered with 1 ... Re8?, overlooking White's other threat: 2 Nxf7 Kxf7? [but 2 ... Rd8 3 Nxf5 is winning anyway] 3 Rg3+ Kh7 [3 ... Kf8 4 Bh6#, or 3 ... Kf6 4 Bg5+ forcing mate] 4 Qe2 [it's always the backwards moves that are hard to spot!] 1–0 as there is no defence to Qxh5#.'

George Allcock

Andrew Walker writes to say that he has been informed of the death on Sunday 4 December of George Allcock, who some players will remember. He says: 'George was a strong county player, playing board 1 or 2 for Notts in the 40s and 50s and still board 4 or 5 up to about 1970. He played in the Nottingham 1936 Congress, so must have been well into his 80s. Long after he gave up local OTB chess, he was still playing on a high board for the Notts correspondence team, and was still close to international level up to a few years ago'.

More information can be obtained from Peter Dodson (01332 872 377).

Herts Congress (9 December)

Ankush Khandelwal (Nomads) shared 1st place with IM Andrew Greet at the Herts Open, held in Hitchin on 3–4 December. Ankush scored 4½/5, for a reported 225 grading performance.

In the Challengers Section, Amisha Parmar (West Nottingham) scored 3½ points to finish 4th.

National Club Championship

West Nottingham played in the first round of the Major section of the National Club Championship on 11 December. Despite having home advantage and winning the toss, the final result was West Nottingham 1 Rose Forgrove 4. All five games were fiercely contested.

West Nottingham now move to the Plate competition.

League results

Division 1

Gambit 1 – West Nottingham 1			
Walkover			Default
	5	– 0	
<i>It is likely that this result will be the subject of an appeal</i>			

Newark 1 – Ashfield 1			
1 Shutt, K.	(159)	0 – 1	Halfpenny, G. (175)
2 Ladds, G.	(144)	½ – ½	Burke, S. (163)
3 Blake, R.	(133)	0 – 1	Webster, R. (154)
4 Combie, A.	(126)	½ – ½	Graham, N. (136)
5 Wollerton, G.	(132)	½ – ½	Taylor, R. P. (124)
	1½	– 3½	

University 1 – West Bridgford 1			
1 Posazhennikov, A.	(193)	0 – 1	Richmond, R. (188)
2 Lee, D.	(165)	0 – 1	Truman, R. (164)
3 McBeth, M.	(160)	½ – ½	Thompson, B. (156)
4 Billingham, J.	(155)	1 – 0	Lavelle, T. (113)
5 Walters, K.	(140)	1 – 0	Hill, F. (107)
	2½	– 2½	

Gambit 2 – University 1			
1 Sudar, D.	(131)	0 – 1	Walker, A. (169)
2 Wright, A.	(134)	½ – ½	Lee, D. (165)
3 Soki, Z.	(–)	½ – ½	McBeth, M. (160)
4 Hayward, B.	(148)	0 – 1	Billingham, J. (155)
5 Edwards, R.	(136)	1 – 0	Poole, T. (–)
	2	– 3	

Division 2

Nomads 1 – Fiveways 1			
1 Khandelwal, A.	(177)	1 – 0	Flynn, D. (137)
2 Hill, M.	(134)	½ – ½	Bhayat, S. (127)
3 Kendall, T.	(119)	0 – 1	Best, I. (116)
4 Ince, D.	(119)	0 – 1	Thorsen, A. (104)
5 Marriott, R.	(131)	0 – 1	Bowen, L. (106)
	1½	– 3½	

Grantham 1 – West Nottingham 2			
1 Payne, N.	(168)	1 – 0	Kingston, I. (144)
2 Pierbattisti, G.	(141)	½ – ½	van der Mast, D. (–)
3 Palmer, T.	(107)	1 – 0	Crawley, J. (78)
4 Nelder, A.	(–)	0 – 1	Messam-Sparks, L. (107)
5 Mason, B.	(102)	0 – 1	Williamson, E. (96)
	2½	– 2½	

Division 3

Nomads 2 – Ashfield 3			
1 Marriott, R.	(131)	0 – 1	Cranmer, S. (132)
2 Troubridge, P.	(104)	0 – 1	Sayer, R. (109)
3 Cronshaw, D.	(105)	½ – ½	Jackson, M. (108)
4 Darby, L.	(97)	½ – ½	Morrey, A. (108)
5 Exton, O.	(98)	½ – ½	Dyce, R. (86)
	1½	– 3½	

Division 4

West Nottingham 4 – Radcliffe & Bingham 2			
1 van der Mast, D.	(–)	1 – 0	Nailard, M. (121)
2 Herbert, M.	(109)	1 – 0	Redburn, B. (95)
3 Messam-Sparks, L.	(107)	1 – 0	Morley, S. (84)
4 Day, J.	(99)	0 – 1	Buttery, J. (84)
5 Lin, D.	(104)	0 – 1	Falgate, M. (72)
	3	– 2	

Ashfield 5 – Newark 2			
1 McIntosh, S.	(96)	0 – 1	Combie, A. (126)
2 Wright, N.	(87)	½ – ½	Burridge, I. (–)
3 Dyce, R.	(86)	0 – 1	Myers, R. (107)
4 Todd, P.	(85)	½ – ½	O'Malia, R. (–)
5 Beeby, F.	(–)	½ – ½	Fox, M. (–)
	1½	– 3½	

Gambit 4 – West Nottingham 3			
1 Harper, M.	(107)	1 – 0	Hinton, G. (135)
2 Hobson, B.	(104)	½ – ½	Burley, P. (115)
3 Padvis, D.	(104)	½ – ½	Willoughby, R. (110)
4 Groves, A.	(76)	½ – ½	Messam-Sparks, L. (107)
5 Gretton, M.	(80)	1 – 0	Lin, D. (104)
	3½	– 1½	

Division 5

University 4 – Grantham 2			
1 Bardsley, C.	(–)	1 – 0	Cumbers, C. (84)
2 Zhou, S.	(–)	1 – 0	Smith, R. (–)
3 Hamby, S.	(–)	0 – 1	Allgood, R. (83)
4 Evans, M.	(77)	1 – 0	Default (–)
	3	– 1	

West Nottingham 6 – Long Eaton 2			
1 Zhang, M.	(–)	0 – 1	Lakhani, A. (101)
2 Garside, A.	(–)	½ – ½	Davies, N. (104)
3 Williamson, O.	(–)	0 – 1	Moss, R. (79)
4 Garside, G.	(–)	0 – 1	Robins, L. (34)
	½	– 3½	

University 4 – Bunkers 4			
1 Bardsley, C.	(–)	½ – ½	Allen, P. (102)
2 Hamby, S.	(–)	½ – ½	Cairney, K. (–)
3 Evans, M.	(77)	1 – 0	James, M. (0)
4 Chan, W.	(–)	1 – 0	Collins, A. (–)
	3	– 1	

League tables

Division 1

Team	P	W	D	L	F	A	Df	Pn	Pt
1 Gambit 1	7	5	1	1	22	13	9	0	11
2 Mansfield 1	5	4	1	0	15	10	5	0	9
3 Ashfield 1	8	4	1	3	21	19	2	0	9
4 University 2	7	3	2	2	20½	14½	6	0	8
5 University 1	8	3	1	4	17	23	–6	0	7
6 Newark 1	6	2	1	3	13½	16½	–3	0	5
7 West Nottingham 1	7	3	0	4	16½	18½	–2	–2	4
8 West Bridgford 1	7	0	4	3	14½	20½	–6	0	4
9 Gambit 2	7	0	3	4	15	20	–5	0	3

Division 2

Team	P	W	D	L	F	A	Df	Pn	Pt
1 West Nottingham 2	7	5	1	1	22½	12½	10	0	11
2 Grantham 1	7	4	2	1	21½	13½	8	0	10
3 Bunkers 1	5	4	0	1	17	8	9	0	8
4 Long Eaton 1	6	4	0	2	18½	11½	7	0	8
5 Ashfield 2	6	2	1	3	14½	15½	-1	0	5
6 Fiveways 1	6	1	1	4	9	21	-12	0	3
7 Nomads 1	6	0	2	4	10	20	-10	0	2
8 Radcliffe & Bingham 1	5	0	1	4	7	18	-11	0	1

Division 3

Team	P	W	D	L	F	A	Df	Pn	Pt
1 Ashfield 3	7	5	0	2	22	13	9	0	10
2 Gambit 3	6	4	1	1	16½	13½	3	0	9
3 Bunkers 2	5	3	1	1	15½	9½	6	0	7
4 Mansfield 2	6	2	2	2	15½	14½	1	0	6
5 Fiveways 2	6	2	2	2	14	16	-2	0	6
6 Nomads 2	6	1	1	4	11	19	-8	0	3
7 Ashfield 4	5	1	0	4	10½	14½	-4	0	2
8 University 3	5	1	1	3	10	15	-5	-2	1

Division 4

Team	P	W	D	L	F	A	Df	Pn	Pt
1 Newark 2	6	6	0	0	22	8	14	0	12
2 Ashfield 5	7	5	0	2	19	16	3	0	10
3 West Nottingham 3	7	4	0	3	19	16	3	0	8
4 Radcliffe & Bingham 2	5	3	0	2	14½	10½	4	0	6
5 Gambit 4	7	2	2	3	16½	18½	-2	0	6
6 West Nottingham 4	6	2	0	4	13	17	-4	0	4
7 Nomads 3	6	1	1	4	11½	18½	-7	0	3
8 Bunkers 3	6	0	1	5	9½	20½	-11	0	1

Division 5

Team	P	W	D	L	F	A	Df	Pn	Pt
1 Long Eaton 3	8	6	1	1	18½	13½	5	0	13
2 West Bridgford 2	5	4	1	0	16	4	12	0	9
3 University 4	7	4	0	3	13½	14½	-1	0	8
4 Grantham 2	7	3	1	3	15½	12½	3	0	7
5 Gambit 5	6	2	2	2	12	12	0	0	6
6 Long Eaton 2	7	2	1	4	13½	14½	-1	0	5
7 West Nottingham 5	6	2	1	3	11½	12½	-1	0	5
8 West Nottingham 6	7	1	1	5	9	19	-10	0	3
9 Bunkers 4	5	1	0	4	6½	13½	-7	0	2