

Notts News

Newsletter of the Nottinghamshire Chess Association

2005–06 No. 15 17 December 2005
<http://www.nottschess.org/> nottsnews@nottschess.org

Introduction

Results from this week appear to have been held up somewhere along the way; when they appear I'll send out a final issue before Christmas.

The absence of results means that there is an opportunity to include a couple of puzzles. The solutions will appear in January. No prizes – just a little fun.

4NCL: Rounds 3 and 4

Richard Truman adds some background to the results reported last week.

Thanks to everyone who turned out at the weekend, which proved 'interesting' (!) The first team managed to win both matches against lower rated opposition, and are now 13th out of the 32 teams. However, it's so tight that we're only 1.5 board points off a promotion spot (four teams go up), so a couple of big wins could push us a long way up the table (have a look at the 4NCL website if that sounds improbable). We still had to put in a lot of hard work and also had some good fortune. Mike's Saturday opponent and Pete's Sunday opponent insisted on playing on interminably in completely drawn positions, whilst my own game on the Saturday was dead level until my opponent made a huge positional blunder. Andy had a nice win on the Sunday.

The second team did very well on the Saturday, despite being outgraded on every board: in fact, we came very close to winning. However, the Sunday was more of a struggle, and both matches had a number of blunders (I think there were three in Brian's Sunday game alone), and the final blunder never seemed to go our way. One comment was that the players who had played on the Saturday seemed to be tired and a bit jaded on the Sunday: I can only say that if this was the case, it wasn't due to a late night! Going out on the town is not that easy in West Bromwich...

The next weekend is in Nottingham on 11–12 February: I'll be in touch with team members nearer the time. Hope you all have a good break over the Christmas period and a very happy New Year.

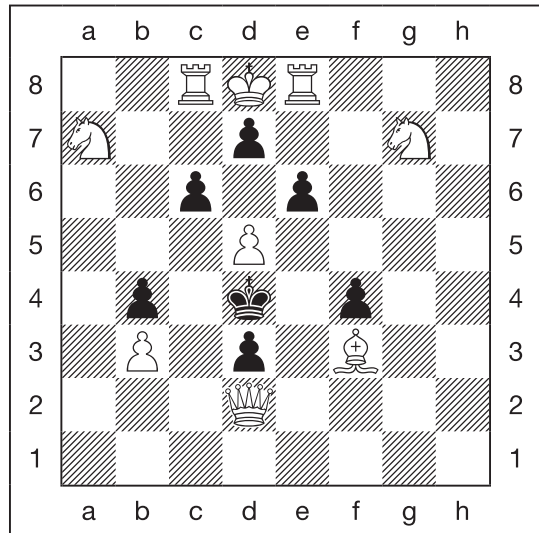
National Club Championship

West Nottingham were not the only club to enter this season's National Club Championship. Graham Ladds of Newark writes: 'We have entered two teams in the Minor competition, for which the average grade has to be under 125. One of our teams won at Barton on Humber 4–0. The other game was a tight affair at Alwoodley (Leeds) which finished 2–2. Board count still left the scores level but Newark won after eliminating bottom board'.

Christmas puzzles

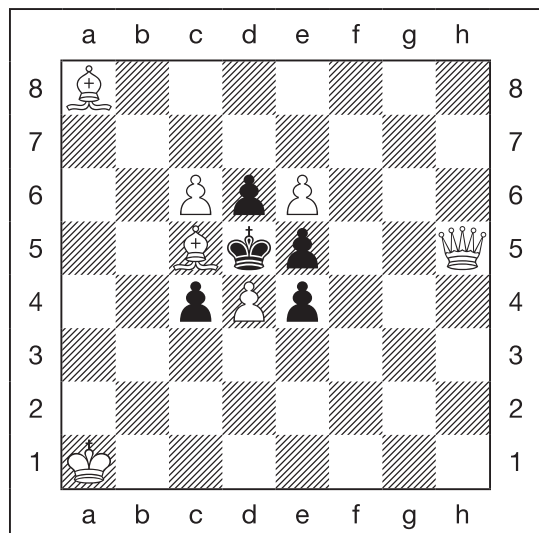
The problems below all have a (tenuous) Christmas theme.

We begin with a very easy problem. The only Christmas connection is that it was described by the composer as a 'Christmas contribution'.



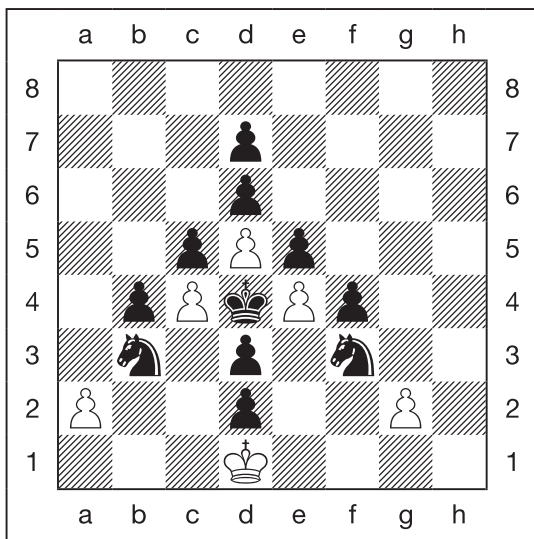
White to play and mate in 2

The next one features a present that needs to be unwrapped:



White to play and mate in 2

The final problem is in the form of a Christmas tree. From the symmetry of the position you might think that there are two solutions, but in fact there's only one. The trick is to work out why.



Black to play and mate in 2

League results

Division 1

West Nottingham 1 – Gambit 2

1 Levens, D.	(155)	0	– 1	Sudar, D.	(131)
2 Nguyen, M. N.	(–)	½	– ½	Wright, A.	(134)
3 Kingston, I.	(144)	0	– 1	Soki, Z.	(–)
4 Collins, J.	(136)	1	– 0	Carlton, A.	(121)
5 Kettley, M.	(137)	½	– ½	Edwards, R.	(136)
2 – 3					

Division 2

No results received.

Division 3

Ashfield 4 – Nomads 2

1 Morrey, A.	(108)	½	– ½	Rositer, A.	(113)
2 Clarke, P.	(96)	1	– 0	Mann, M.	(–)
3 Potter, C.	(87)	0	– 1	Cronshaw, D.	(105)
4 Justice, E.	(76)	½	– ½	Mann, A.	(–)
5 Dyce, R.	(86)	½	– ½	Darby, L.	(97)
2½ – 2½					

Division 4

Nomads 3 – West Nottingham 4

1 Exton, O.	(98)	1	– 0	Herbert, M.	(109)
2 Pynegar, T.	(96)	1	– 0	Lin, D.	(104)
3 Darby, L.	(97)	½	– ½	Williamson, E.	(96)
4 Ivas, A.	(–)	1	– 0	Crawley, J.	(78)
5 Smith, P.	(87)	1	– 0	Williamson, P.	(–)
4½ – ½					

Division 5

No results received.

League tables

Division 1

Team	P	W	D	L	F	A	Df	Pn	Pt
1 Gambit 1	7	5	1	1	22	13	9	0	11
2 Mansfield 1	5	4	1	0	15	10	5	0	9
3 Ashfield 1	8	4	1	3	21	19	2	0	9
4 University 2	7	3	2	2	20½	14½	6	0	8
5 University 1	8	3	1	4	17	23	–6	0	7
6 Newark 1	6	2	1	3	13½	16½	–3	0	5
7 Gambit 2	8	1	3	4	18	22	–4	0	5
8 West Nottingham 1	8	3	0	5	18½	21½	–3	–2	4
9 West Bridgford 1	7	0	4	3	14½	20½	–6	0	4

Division 2

Team	P	W	D	L	F	A	Df	Pn	Pt
1 West Nottingham 2	7	5	1	1	22½	12½	10	0	11
2 Grantham 1	7	4	2	1	21½	13½	8	0	10
3 Bunkers 1	5	4	0	1	17	8	9	0	8
4 Long Eaton 1	6	4	0	2	18½	11½	7	0	8
5 Ashfield 2	6	2	1	3	14½	15½	–1	0	5
6 Fiveways 1	6	1	1	4	9	21	–12	0	3
7 Nomads 1	6	0	2	4	10	20	–10	0	2
8 Radcliffe & Bingham 1	5	0	1	4	7	18	–11	0	1

Division 3

Team	P	W	D	L	F	A	Df	Pn	Pt
1 Ashfield 3	7	5	0	2	22	13	9	0	10
2 Gambit 3	6	4	1	1	16½	13½	3	0	9
3 Bunkers 2	5	3	1	1	15½	9½	6	0	7
4 Mansfield 2	6	2	2	2	15½	14½	1	0	6
5 Fiveways 2	6	2	2	2	14	16	–2	0	6
6 Nomads 2	7	1	2	4	13½	21½	–8	0	4
7 Ashfield 4	6	1	1	4	13	17	–4	0	3
8 University 3	5	1	1	3	10	15	–5	–2	1

Division 4

Team	P	W	D	L	F	A	Df	Pn	Pt
1 Newark 2	6	6	0	0	22	8	14	0	12
2 Ashfield 5	7	5	0	2	19	16	3	0	10
3 West Nottingham 3	7	4	0	3	19	16	3	0	8
4 Radcliffe & Bingham 2	5	3	0	2	14½	10½	4	0	6
5 Gambit 4	7	2	2	3	16½	18½	–2	0	6
6 Nomads 3	7	2	1	4	16	19	–3	0	5
7 West Nottingham 4	7	2	0	5	13½	21½	–8	0	4
8 Bunkers 3	6	0	1	5	9½	20½	–11	0	1

Division 5

Team	P	W	D	L	F	A	Df	Pn	Pt
1 Long Eaton 3	8	6	1	1	18½	13½	5	0	13
2 West Bridgford 2	5	4	1	0	16	4	12	0	9
3 University 4	7	4	0	3	13½	14½	–1	0	8
4 Grantham 2	7	3	1	3	15½	12½	3	0	7
5 Gambit 5	6	2	2	2	12	12	0	0	6
6 Long Eaton 2	7	2	1	4	13½	14½	–1	0	5
7 West Nottingham 5	6	2	1	3	11½	12½	–1	0	5
8 West Nottingham 6	7	1	1	5	9	19	–10	0	3
9 Bunkers 4	5	1	0	4	6½	13½	–7	0	2