

Notts News

Newsletter of the Nottinghamshire Chess Association

2006-07 No. 19 23 December 2006

<http://www.nottschess.org/> nottsnews@nottschess.org

Copyright © Nottinghamshire Chess Association 2006

18th Nottingham Rapidplay

Robert Richmond

The 18th Nottingham rapidplay will take place at Nottingham High School on Sunday 18 February, starting 10.00 a.m. Entry forms will go out immediately after Christmas. Enquiries to Robert Richmond, 25 Wilford Lane, West Bridgford, Nottingham NG2 7QZ. Tel: 0115 945 5908; email: Robrchmnd@aol.com.

League results

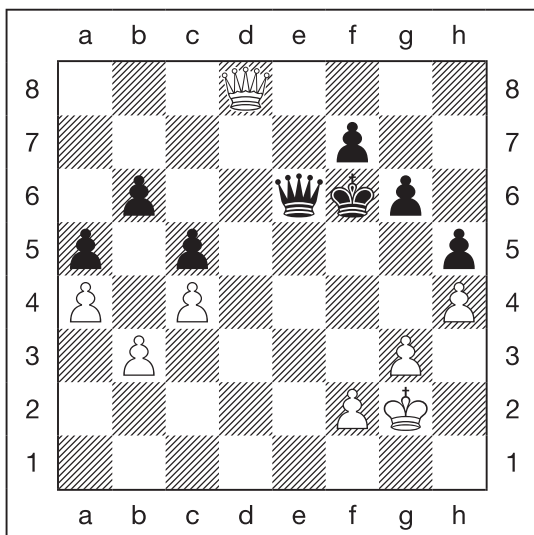
There were no more results reported this week.

Nomads' appeal against the result of one game in the match between Ashfield 3 and Nomads 1 has been resolved by the LMC in favour of Ashfield 3. The results of the game (a draw) and of the match (also a draw) therefore stand as published in Issue No. 15.

The league tables are therefore unchanged from last week, so I'm not repeating them here.

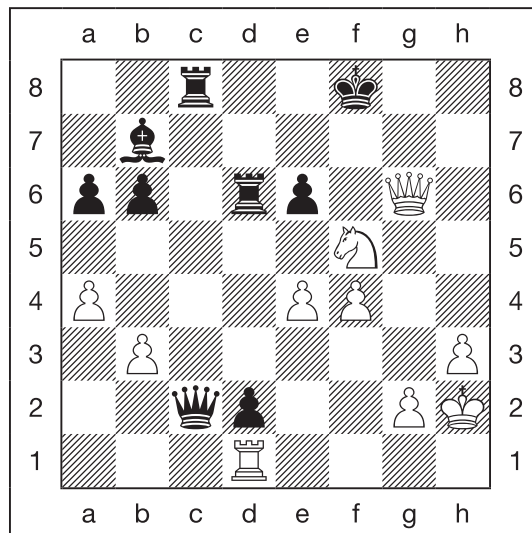
Christmas puzzles

Christmas is a time for giving, so for this year's puzzles I'm asking you to find out how the loser contrived to give the game to the opponent. Lateral thinking and close attention to the wording may be necessary in some cases.



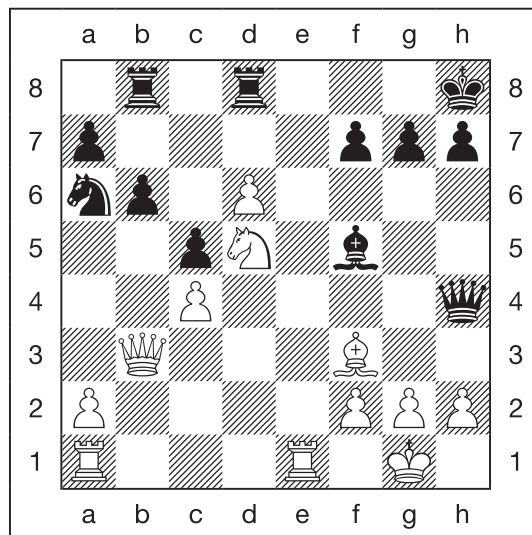
Black to move

This dead drawn endgame has been going on for over 20 moves, with neither side making any progress. However, Black now found a way to finish the game quickly – in White's favour. What was the continuation?



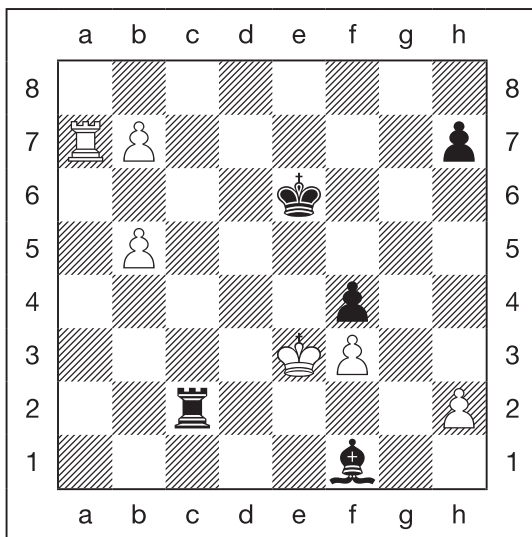
Black to move

White threatens mate in 2. How did Black fail to deal with this? *Hint:* since Black has many moves that allow White to carry out the threat, I'm looking for the most conclusive way to lose. Bonus points for finding the only move to draw.



White to move

Both players were feeling generous here. Black's last move (21...Kh8) avoided the fork at e7, but it should have been a losing mistake. White played 22. Re5, but what did she miss?



White to move

Finally, a conundrum that had nothing to do with the players. The final move that initially appeared on the Internet was 42. Ke4?? (allowing 42...Rc4#), but there then followed 'Black resigns'. What's the explanation?

Special events

Ian Kingston

Some of you may recall that West Nottingham CC is in charge of the NCA's special events this season. Latterly the main such event has been the NCA Blitz Championship. We're keen to expand on that, but looking at the amount of chess that is scheduled for the first four months of the year (just over half of the League season; three more rounds of the Handicap KO; Rapidplay; Congress; county matches; and three more 4NCL weekends) I suspect that it would be pushing our luck to try squeezing any more in until after the season is over. And the organisers would probably drop dead from exhaustion – definitely not a plus from my perspective.

We have in mind a series of three or four events to take place during May, June and July. One of these would be the Blitz Championship, but we're completely open to suggestions about the others. Venues, dates, times (evenings? weekends?) are also all up for grabs.

Please send any thoughts, ideas or suggestions to me.