

# Notts News

## Newsletter of the Nottinghamshire Chess Association

2006–07 No. 32 24 March 2007

<http://www.nottschess.org/> [nottsnews@nottschess.org](mailto:nottsnews@nottschess.org)

Copyright © Nottinghamshire Chess Association 2007

### 32nd Nottingham Congress

21–22 April

Bramcote Hills Sport and Community College, Moor Lane,  
Bramcote, Nottingham NG9 3GA

Three sections:

#### ♦ Open

Prizes: £300, £150, 100

Entry fee: £20 adults, £16 juniors

#### ♦ Major (players graded below 160)

Prizes: £250, £120, 80

Entry fee: £18 adults, £14 juniors

#### ♦ Minor (players graded below 120)

Prizes: £200, £80, 50

Entry fee: £16 adults, £12 juniors

All three competitions are five-round Swisses.

If you only play one congress a year, make it your local one!

**Enter now:** entry forms are available from the NCA web site (<http://www.nottschess.org/>) and all NCA clubs. Alternatively, contact Robert Richmond on 0115 945 5908.

### Nottinghamshire U150–Leicestershire U150

Ian Kingston

On paper, with an average advantage of about 15 grading points per board, this looked like an easy match for Notts. But averages don't tell the whole story, and it only takes one or two early defeats for nerves to fray throughout the stronger team. This was not one of those occasions.

We started well: Bob Taylor won quickly; then, following a draw from Kevin Harvey, wins by David Toms and Steve Hunter took us into a comfortable 3 point lead. A flurry of draws followed (me, Tim Lane, Neil Graham and Bill Ray), but around this stage Leicestershire still had chances: John Tassi and Keith Roper looked to be lost; Matt Basey and Brian Hayward were probably worse; and the only clear advantage was Phil Morgan's endgame.

From that point on, however, almost everything started to go our way. Will Place and Alex Combie drew, with Alex perhaps being a little unlucky. His pieces occupied the edges of the board while his opponent's pieces were all huddled around the king on e1 – a quite bizarre position. A piece sacrifice broke through, but although Alex regained the piece his opponent found a perpetual to save the game. Phil found the right plan and won, and then John somehow scrambled a draw while two pawns down in a bishop ending. Shortly afterwards, Brian found some counterplay that convinced his opponent to stop trying for a win.

The rest of the match was effectively one-way traffic. Keith Brameld, after a fluctuating game, reached an ending in which

he had R + N + 2P vs. 2R, but just as it might have become interesting his opponent blundered a rook away. Matt turned a pawn deficit into an overwhelming attack, and Keith Roper, who had been clinging on for dear life in a dreadful position for most of the game, suddenly found himself with an extra queen. And when it was all over, not a single Notts player had lost a game.

So yet again Nottinghamshire take the MCCU title – a tribute, more than anything, to Neil Graham's fine organisational skills. The next match will be on 19 May at home (against either Yorkshire or Cumbria according to the NCCU web site). Keep the date free!

*Tim Lane adds his perspective:*

Interesting match on Saturday I thought. At one point the completed games were 6–2 in our favour, but I was struggling to see where a further 2½ points were coming from. John Tassi, Keith Roper, Brian Hayward and Keith Brameld all had dodgy-looking positions, Neil Graham and Phil Morgan looked to be heading for draws, Matt Basey had an edge but no clear path to victory and Alex Combie's game was beyond me. If things went badly I could see us losing 8.5–7.5!

In fact my evaluations soon turned out to be over-pessimistic when John defended cunningly to save a half point and Phil Morgan turned out to have a win. Now I could see us scraping home, albeit by a narrow margin. Then things went from good to better when Keith Roper's opponent lost his queen, Keith Brameld turned his dodgy-looking position into a win and Brian salvaged a draw.

Alex Combie's game ended as a draw and I think we were 9.5–4.5 up when I left.

#### Nottinghamshire U150 – Leicestershire U150 17 March 2007

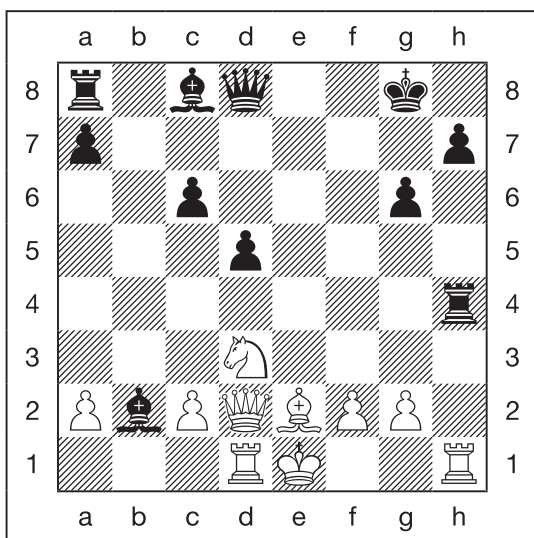
Board	Grade	Score	Grade
1 Brian Hayward	148	½–½	Lewis Turner 148
2 Ian Kingston	144	½–½	Dave Farrall 142
3 Matt Basey	148*	1–0	John Pattinson 142
4 Keith Brameld	143	1–0	Sean Hewitt 139
5 Kevin Harvey	142	½–½	Ian Dodds 139
6 Steve Hunter	139	1–0	Ben Pourmozaeri 135
7 Tim Lane	139	½–½	Otto Hardy 131
8 Alex Combie	139	½–½	Steve Wylie 130
9 Will Place	135	½–½	Peter Harrison 127
10 Keith Roper	143	1–0	Phil Watkinson 126
11 Neil Graham	133	½–½	Steve Turvey 129
12 John Tassi	131	½–½	Francis Katumba 115
13 Bill Ray	131	½–½	Cyril Johnson 102
14 David Toms	129	1–0	Mick Thornton 98
15 Bob Taylor	127	1–0	Mick Adams 89
16 Phil Morgan	134	1–0	Ron King 84
11½–4½			

Alex Combie has kindly supplied a copy of his game, which is now on the web site (linked from the match report). Here it is, with notes generated by our trusty silicon friend.

**White:** Steve Wylie (*Leicestershire*)

**Black:** Alexander Combie (*Nottinghamshire*)

**1.d4 Nf6 2.Nf3 g6 3.Nc3 d5 4.Bf4 Bg7 5.e3 0-0 6.Ne5 Nh5 7.Bg3 Nxg3 8.hxg3 c5 9.Be2 cxd4 10.exd4 Nc6 11.Nxc6 bxc6 12.Na4 e5 13.dxe5 Bxe5 14.Qd2 f5 15.Rd1 f4 16.gxf4 Rxf4 17.Nc5 Bxb2?** (There is a win here with 17... Rh4 18.Rxh4 Qxh4 19.Bf3 Bxb2) **18.Nd3?** (White could have taken the rook, since it appears that black doesn't have adequate compensation for the sacrificed material: 18.Qxf4 Qa5+ 19.Kf1 Qxc5 20.Qh4) **18...Rh4**



This is the strange position that attracted so much attention. No one was quite sure whether there was a win here for Alex or not, but from now on both players find the best moves and the computer's evaluation of the position never shifts from 0.00, indicating a draw. **19.Rxh4 Qxh4 20.Nxb2** All other moves lose. **20...Qh1 + 21.Bf1 Ba6** (Black could try 21...Bg4 22.f3 Qh4+ 23.Qf2 Re8+ 24.Be2 Qh1 + 25.Kd2 Qh6+ 26.Kc3, but it seems that White can escape with the extra material.) **22.Qe3** Again, the only move to draw. **22...Bxf1** (22...Qxf1 + 23.Kd2 Qxg2 24.Qe6+ Kg7 25.Qe7+ Kh6 26.Qh4+ draws) **23.Qe6+ Kg7 24.Qe7+ Kh6 25.Qe3+ Kg7** (Black cannot avoid the perpetual, as the following analysis shows: 25...g5 26.Qe6+ Kg7 (26...Kh5?? 27.g4+ Kh4 28.Qh6+ Kxg4 29.Qxh1 and White wins) 27.Qe7+ draws, as does 25...Kh5 26.Qe5+ Kh6 (not 26...g5? 27.g4+ Kg6 28.Qf5+ Kg7 29.Qxg5+ Kf7 30.Kd2, with a significant advantage for White.) 27.Qe3+) **26.Qe7+ Kh6 27.Qe3+ 1/2-1/2**

## National Schools Championship Quarter-Finals

John Swain

Nottingham High School repeated last year's feat of having two teams in the National Quarter-Finals (last year, this was a first for the competition). This year, the two teams were not paired together, so both had a chance to qualify for the semi-finals/finals at Uppingham School, 5-6 July.

NHS 'A' travelled to and defeated Norwich School 4-2 (the team was Ankush Khandelwal (Ashfield); Kishan Lakhani (Long Eaton); Michael Keetley (West Nottingham); Oliver Exton (Nomads); Jonathan Day (West Nottingham); Daniel Lin (West Nottingham)).

NHS 'B', requiring 2½ points under the age handicap rules, fell half a point short and lost at home 2-4 to Manchester Grammar School 'A' (the team was Toby Thurgood (Nomads); Edwin Justice (Ashfield); Hamzah Ali (Gambit); Henry Pynegar (Nomads); Eamonn Lim (West Nottingham); Michael Zhang (West Nottingham)).

The 'A' team therefore will have a chance to defend its national title, won in 2005 and 2006.

## Nottinghamshire U125-Shropshire U125

Nottinghamshire lost the final match of the season 7½-8½. Neil Graham stepped in to organise the match. Full details next time.

## EPSCA Under 11 Zonal

Nottinghamshire's Under 11s matched the Under 9s' success by winning their English Primary Schools Chess Association Under 11 Zonal tournament, held in Manchester on 17 March. This was achieved despite the absence of two of their top five players, including the top board.

The strength in depth of the Nottinghamshire team can be seen from the fact that the bottom eight boards (of 20) dropped just 3 points from a maximum of 24. The eight reserves, playing in a separate competition, conceded 2½ points from 24.

The top six teams qualified for the national final, to be hosted by Nottinghamshire on 12 May.

	Team	R1	R2	R3	Total
1	Nottinghamshire	14	16	14	44
2	Yorkshire	13	11½	16½	41
3	Manchester	11½	14½	13	39
4	Oldham	12	11	13	36
5	Cheshire	11½	14½	8	34
6	Liverpool	10½	8	11	29½
7	Tameside	10	10	8½	28½
8	Lancashire	10	7½	6½	24
9	Staffordshire	6½	7	8½	22
10	Shropshire	1	0	1	2

## League results

### Division 1

Newark 1 – Bunkers 1					
1	Coates, D.	(161)	½	– ½	Harrison, J. (150)
2	Ladds, G.	(154)	1	– 0	Jennings, G. (143)
3	Blake, R.	(137)	1	– 0	Harvey, K. (142)
4	Combie, A.	(139)	1	– 0	Wilson, R. (74)
5	Wollerton, G.	(123)	1	– 0	Default (–)
		4½ – ½			

### Division 2

West Nottingham 1 – Grantham 1					
1	Levens, D.	(167)	0	– 1	Payne, N. (168)
2	Basey, M.	(–)	1	– 0	Palmer, T. (113)
3	Messam-Sparks, L.	(121)	1	– 0	Mason, B. (102)
4	Kingston, I.	(143)	1	– 0	Cumbers, C. (76)
5	Collins, J.	(130)	1	– 0	Neumann, P. (–)
		4 – 1			

### Ashfield 3 – Gambit 2

1	Cranmer, S.	(139)	0	–	1	Wright, A. J.	(154)
2	Sayer, R.	(103)	0	–	1	Sudar, D.	(134)
3	Lewis, T.	(107)	0	–	1	Hunter, S.	(139)
4	Morrey, A.	(104)	½	–	½	Tassi, J.	(131)
5	Jackson, M.	(107)	½	–	½	Gibson, G.	(107)
			<b>1</b>	–	<b>4</b>		

### Division 3

#### West Nottingham 3 – Nomads 2

1	Nehra, P.	(–)	1	–	0	Thurgood, T.	(109)
2	Willoughby, R.	(113)	0	–	1	Pynegar, T.	(106)
3	Burley, P.	(114)	½	–	½	Darby, L.	(107)
4	Berdunov, N.	(–)	½	–	½	Rossiter, A.	(117)
5	Crawley, J.	(68)	0	–	1	Cronshaw, D.	(96)
			<b>2</b>	–	<b>3</b>		

#### Fiveways – Gambit 3

1	Flynn, D.	(132)	½	–	½	Tassi, J.	(131)
2	Best, I.	(117)	0	–	1	Gibson, G.	(107)
3	Griffiths, D.	(106)	1	–	0	Hopkinson, G.	(101)
4	Bowen, L.	(113)	1	–	0	Brown, A.	(87)
5	Thorsen, A.	(105)	1	–	0	Chambers, A.	(–)
			<b>4½</b>	–	<b>½</b>		

*Dave Griffiths:* If there is an award to the most sporting team of the year then Gambit 3 win it for this match. The match was 'sportingly' delayed a week as Fiveways couldn't raise a full team due to work and family commitments. To quote Gary Hopkinson (Gambit 3) '... we want to play a proper chess match, not take an easy win against 3 players...' – respect!

Unfortunately on the night, Gambit continued with their generosity. Gary physically picked up his knight when only a queen move would avoid mate. (Gary, I couldn't even give you the benefit of 'accidentally touching' the piece, as you put the knight on your head in exasperation!). As the match was heading for a draw (the proper result on the night), Lew managed to swindle a win albeit being a Rook down. Unfortunately, this result may ultimately relegate Gambit 3, if so – Gambit 3 get my vote for being the most sporting team we have played and Gary deserves a 'knighthood'. (Sorry, I couldn't resist that one.)

### Division 4

#### West Bridgford 2 – University 3

1	Hill, F.	(102)	0	–	1	Satz, A.	(146)
2	Milford, M.	(69)	0	–	1	Hemani, G.	(–)
3	Godfrey, R.	(–)	0	–	1	Jones, D.	(–)
4	Gold, D.	(–)	0	–	1	Yang, J.	(112)
5	Garnett, R.	(–)	1	–	0	Default	(–)
			<b>1</b>	–	<b>4</b>		

### Division 5

#### West Nottingham 5 – University 4

Walkover

Default

**4** – **0**

## League tables

All promotion and relegation indications are provisional.

### Division 1

Team	P	W	D	L	F	A	Df	Pn	Pt
1 University 2	12	9	1	2	39½	20½	19	0	19
2 Ashfield 1	12	7	2	3	34	26	8	0	16
3 West Bridgford 1	11	6	3	2	32	23	9	0	15
4 Gambit 1	11	4	3	4	28½	26½	2	0	11
5 Mansfield 1	11	4	3	4	28½	26½	2	0	11
6 University 1	13	5	1	7	30	35	–5	0	11
7 Newark 1	11	2	2	7	21½	33½	–12	0	6
8 'Bunkers 1	13	2	1	10	21	44	–23	0	5

### Division 2

Team	P	W	D	L	F	A	Df	Pn	Pt
1 PWest Nottingham 1	13	11	0	2	43½	21½	22	0	22
2 PLong Eaton	12	10	1	1	41½	18½	23	0	21
3 Gambit 2	12	6	1	5	34	26	8	0	13
4 West Nottingham 2	12	6	1	5	32	28	4	0	13
5 Ashfield 2	12	4	2	6	27	33	–6	0	10
6 Nomads 1	12	4	1	7	27	33	–6	0	9
7 Grantham 1	12	3	1	8	21	39	–18	0	7
8 'Ashfield 3	13	1	1	11	19	46	–27	0	3

### Division 3

Team	P	W	D	L	F	A	Df	Pn	Pt
1 Radcliffe & Bingham 1	11	8	0	3	31	24	7	0	16
2 Mansfield 2	10	6	1	3	30	20	10	0	13
3 West Nottingham 3	11	5	2	4	29	26	3	0	12
4 Fiveways	11	5	1	5	25½	29½	–4	0	11
5 Newark 2	9	4	1	4	26	19	7	0	9
6 Nomads 2	10	3	2	5	22	28	–6	0	8
7 Bunkers 2	9	3	1	5	17½	27½	–10	0	7
8 Gambit 3	11	2	2	7	24	31	–7	0	6

### Division 4

Team	P	W	D	L	F	A	Df	Pn	Pt
1 University 3	13	9	2	2	41	24	17	0	20
2 West Nottingham 4	12	7	3	2	36½	23½	13	0	17
3 Gambit 4	11	6	3	2	30½	24½	6	0	15
4 Nomads 3	11	6	1	4	32	23	9	0	13
5 Ashfield 4	12	5	3	4	32	28	4	0	13
6 Radcliffe & Bingham 2	11	3	2	6	24½	30½	–6	0	8
7 Ashfield 5	11	1	2	8	17½	37½	–20	0	4
8 West Bridgford 2	11	0	2	9	16	39	–23	0	2

### Division 5

Team	P	W	D	L	F	A	Df	Pn	Pt
1 West Nottingham 5	10	6	2	2	28½	11½	17	0	14
2 Grantham 2	9	6	2	1	24½	11½	13	0	14
3 Bunkers 3	11	4	4	3	21½	22½	–1	0	12
4 Gambit 5	9	3	4	2	17½	18½	–1	0	10
5 University 4	12	4	2	6	22	26	–4	–2	8
6 West Nottingham 7	10	3	1	6	15½	24½	–9	0	7
7 West Nottingham 6	11	2	1	8	14½	29½	–15	0	5