

Notts News

Newsletter of the Nottinghamshire Chess Association

2006–07 No. 33 31 March 2007

<http://www.nottschess.org/> nottsnews@nottschess.org

Copyright © Nottinghamshire Chess Association 2007

32nd Nottingham Congress

21–22 April

Bramcote Hills Sport and Community College, Moor Lane,
Bramcote, Nottingham NG9 3GA

Three sections:

♦ Open

Prizes: £300, £150, 100

Entry fee: £20 adults, £16 juniors

♦ Major (players graded below 160)

Prizes: £250, £120, 80

Entry fee: £18 adults, £14 juniors

♦ Minor (players graded below 120)

Prizes: £200, £80, 50

Entry fee: £16 adults, £12 juniors

All three competitions are five-round Swisses.

If you only play one congress a year, make it your local one!

Enter now: entry forms are available from the NCA web site (<http://www.nottschess.org/>) and all NCA clubs. Alternatively, contact Robert Richmond on 0115 945 5908.

Rules Revision Meeting

Andrew Walker

The Rules Revision Meeting of the NCA will be held on Monday 4 June, at 7:30 p.m. at West Nottingham Chess Club. Proposals for changes to the League Rules should reach me no later than 30 April, and should be made in accordance with Rule A5 (see <http://nottschess.org/info.html#rules>). The NCA accepts e-mails (to secretary@nottschess.org) as 'writing'.

The RRM is also a General Meeting of the NCA; any other items for the agenda should reach me no later than 14 May. The NCA Constitution (<http://nottschess.org/info.html#const>, or immediately following the League Rules) details who may attend and vote at the meeting.

The NCA Annual General Meeting is provisionally set for the week beginning 2 July; date and venue to be announced.

Please note the change of venue. The Executive Committee intends to rotate general meetings around various venues in the future to encourage wider participation in NCA affairs.

Nottinghamshire U125—Shropshire U125

Neil Graham

Despite being given a two-point lead by default and outgrading the opposition on 12 of the 14 boards played, Notts still managed to lose their match against Shropshire by the narrowest margin of 8½–7½.

Shropshire had conceded one board on Friday night and a further player didn't show. Although I had stood one player down, the message didn't get through and consequently I had

16 players show up. However, I was fortunate to find that there were a number of defaults at the 4NCL matches down the road, and eventually Sally McIntosh and George Murfet were dispatched to the Park Inn Hotel to play.

Meanwhile, Notts had established a 5–2 lead against Shropshire. Nigel Wright was playing downstairs against a gentleman who was unable to manage the stairs. I saw nothing of his game and can only say he won quickly. Marcel was a pawn up, won a further pawn and converted to an easy endgame win. Although under pressure on the kingside, Bob Willoughby forced his opponent's king from the queenside into the middle of the board, where it was mated.

In the back room, though, our lower boards struggled. Ben Hobson lost to back rank threats with his king stuck on h8 behind pawns. Both Dave Griffiths and Derek Cronshaw were pieces adrift and Ray Sayer was the exchange down. Despite some ingenious defence all these games were eventually lost.

The match would therefore be either won or lost in the main room. None of the positions inspired too much confidence, with the exception of Phil Burley who was a clear rook up. However, he put a piece on an incorrect square, enabling his opponent to win the rook with a queen check and the game was drawn. Len Darby was overwhelmed by an attack and James Thomson lost three pawns trying to extricate his bishop; as more pawns fell a loss was inevitable. Darran was a pawn up for a considerable time but was unable to hold onto it and a draw was the result. With three games to declare, Shropshire had clawed their way back to a 7–6 lead.

Nottinghamshire U125 – Shropshire U125

24 March 2007

Board	Grade	Score	Grade
1 Marcel Taylor	120	1–0	John Liddell 124
2 James Thomson	121	0–1	Chris Lewis 117
3 Jonathan Day	119	½–½	Gary White 116
4 Alan Robinson	117	1–0	Mark Billington 116
5 Darran Ince	116	½–½	Peter Crean 116
6 Norman Davies	116	0–1	John Westhead 115
7 Phil Burley	116	½–½	Ian Davies 110
8 George Murfet	113	1–0	Default –
9 Robert Willoughby	113	1–0	Alan Silver 102
10 Len Darby	107	0–1	Andy Tunks 102
11 Dave Griffiths	106	0–1	Ieuan Fenton 101
12 Ray Sayer	103	0–1	Roger Brown 98
13 Ben Hobson	99	0–1	Alex Taylor 90
14 Derek Cronshaw	96	0–1	Richard Gillespie 82
15 Nigel Wright	98	1–0	Martin Patterson 69
16 Walkover	–	1–0	Default –

7½–8½

Alan Robinson's game developed into his usual time scramble, but he emerged with a couple of seconds to spare two connected passed pawns to the good in a rook and pawn endgame. The pawns marched down the board and a resignation was soon forthcoming. Jonathan Day's game was very complex, but eventually an endgame of R + 2P versus B + 4 or 5P resulted, with the bishop supporting some advancing passed pawns. It was not easy to see a winning plan as Jonathan could well have left himself facing an unstoppable rook's pawn, so a draw was the result and the match was tied at 7½–7½.

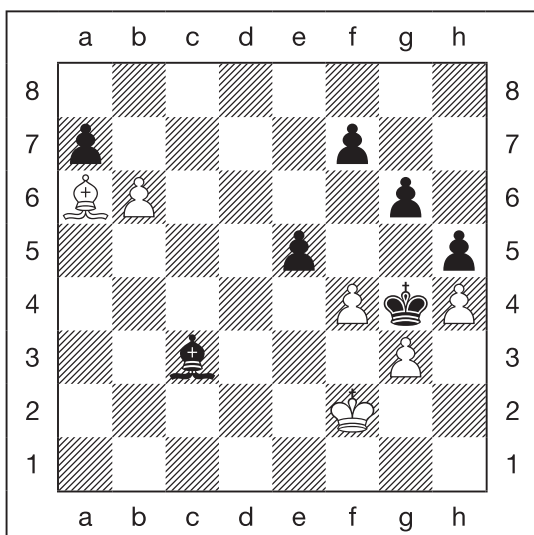
The Shropshire captain John Westhead eventually scored the full point in a drawn-out game against Norman Davies to take the match by the narrowest possible margin. Norman's two rooks could not resist a R, B and N assisted by a passed pawn after his opponent had successfully engineered a queen exchange when under some pressure.

Could I thank everyone for responding to my call to play. I'll add more later concerning the future of the team.

4NCL – fourth weekend

David Levens

It is not often that I find myself sitting next to a team colleague who cannot help laughing evilly at my demise, but that is exactly what happened towards the end of Round 7. Having outplayed my opponent for the best part of 4 hours I fell into the most bizarre of traps, and was mated by a lone bishop (see below)! My only excuse was that I had been coaching for 3 hours and done 2 hours driving immediately before sitting down to play; my blunder, therefore, occurred at the end of 9 hours mental effort and while still coping with the remains of a bout of 'flu. Andy Walker, sitting next to me, could not help giggling at my expense, but, as he said, it was an amusing finish – at least it would have been if I hadn't been on the wrong end of it!



Stinton-Brownbridge-Levens

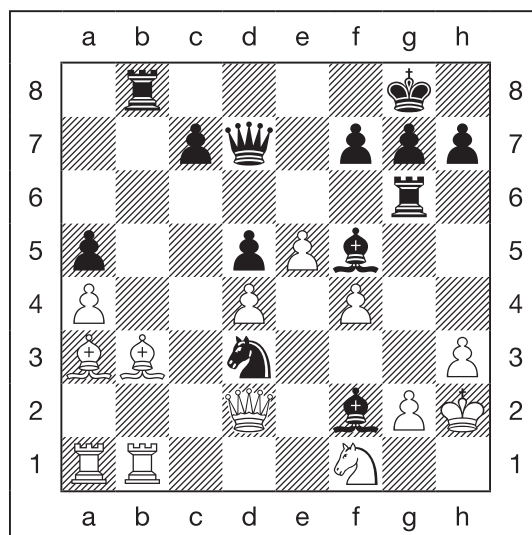
Black to move

48...Bd4+? (48...axb6 preserves winning chances) **49.Kg2 Bxb6??** (I never even considered the following switchback.) **50.Bc8+ f5 51.Ba6** 1–0 (since 51... exf4 52.Be2+ f3+ 53. Bxf3#)

This episode left me feeling very guilty, but fortunately Rob Richmond managed to turn a lost game into a win, allowing Notts 1 to draw the match. Of the rest, Pete Mercks also went down; Andy duly won his fourth board encounter, Steve Burke

went down on board 5 and Richard Truman secured the draw with a fine win on Board 6.

With our two teams on different floors of the hotel it wasn't easy to keep track of everything that went on; I spent a lot of time going up and down in the one working lift, trying to keep an eye on the second team. Here things were not so good. Notts 2 outgraded their opponents on both days, and by as much as 87 on the Saturday, but still managed to lose both 2–4. However, we were not helped by Kishan having a very bad weekend (he blundered a piece on both days) and by Neil Graham losing to Lateefah Messam-Sparks on Sunday, after winning a piece on about move 6. Only Anjali Lakhani had a plus score after two games – 1½. [David has kindly omitted to mention my own contribution: turning a won position into a dead loss in three moves as follows:



Galliano-Kingston

Black to move

I'd been playing really nicely, and now spotted a chance to win with a spectacular rook sacrifice. **26...Rxcg2+?! (In fact, 26... Be4 is even stronger, since 27.g4 leads to mate after 27... Qxcg4! 28.Qxf2 Qg2+ 29.Qxcg2 Rxcg2+ 30.Kh1 Nf2# and all other moves lose copious amounts of material.) 27.Kxcg2 Bxh3+?** (27...Rb6 still wins easily. **28.Kh2 Qg4??** (All as calculated, but I'd completely overlooked White's defence. Instead, I can still play for a win with 28...Bxf1, but it's not clear cut.) **29.Bxd5** The only move, but it defends everything. Part of the problem is the back rank mate threat, and my knight is also hanging. I'm also a rook down following the sacrifice on g2. Even so, I wasn't immediately worried by White's move: with a queen and three minor pieces swarming around the white king, I felt sure that there would be a winning line. But the longer I thought, the more I came to realise that I was simply lost. **29...Rd8** (Objectively best is 29...Rxb1 30.Rxb1 Qh5, but after 31.Ng3 Bxc3+ 32.Kxc3 Bc8 33.e6 it's all over. **30.Qxd3 Bg1+ 31.Kh1 Bf2** A mate threat! But after the forced **32.Nh2!** Black is out of swindling opportunities. I played a few more pointless moves and resigned. 1–0 – Ed.]

Notts 1, outgraded by 60 points a board against Celtic Tigers on Sunday, played above themselves and scored a superb 4–2 win. After my debacle of the previous day I was determined to make amends. My opponent played the Fort Knox variation of the French, and although rated 2137 Elo he didn't really seem to know what he was doing and I duly notched up the point when still about an hour ahead on the clock. Kishan then lost and the remaining four games all

looked in the melting pot. Rob had a complicated game against someone rated 2330; Tim Walker on Board 3 had a difficult position; Richard Truman had a typical Sicilian Najdorf and I wasn't sure who was winning; and Steve Burke, on Board 5, was a piece down in a Blackmar-Diemer, but with the normal fierce attack. Anxious about the overall result I hung around for as long as possible and by the time I left Steve had won very nicely, but Tim had succumbed – 2–2. However, so far as I could see Rob was now definitely winning and Richard was the exchange up; by the end of the weekend we were in equal second place with excellent chances of earning promotion to Division 3 next season.

EPSCA Girls Under 11 Championship

After the success of the Under 9 and Under 11 teams in winning their English Primary Schools Chess Association zonals, it was the Nottinghamshire girls' turn to show what they can do. There are no zonal championships for the girls, so it was straight into the final.

The powerful Wey Valley (Surrey) team shot straight into the lead, scoring 11/12 in Round 1. Astonishingly, they improved on that in Round 2, when it became clear that the chasing pack – Devon, Sussex, Nottinghamshire and Oxford – would be fighting for second place. Nottinghamshire narrowly led this group by half a point going into Round 3, but a strong finish by Oxford took them into clear second place. In a nail-biting finish, Notts held on to take the bronze medals by half a point – a big improvement on last year's 9th place.

In the Audio Chess Grand Prix, which awards points to each county depending on results in EPSCA's zonal and national events, Nottinghamshire are now tied for first place with Wey Valley. With home advantage in the the U11 finals, there is a real chance for Nottinghamshire to win the Grand Prix.

Team	R1	R2	R3	Total
1 Wey Valley	11	11½	8	30½
2 Oxford	8½	8½	10½	27½
3 Nottinghamshire	8½	9	7	24½
4= Devon	9	8	7	24
Sussex	9½	6	8½	24
6 Liverpool	7	4½	6½	18
7 Berkshire	7	4	6	17
8 Barnet	5	7	4½	16½
9 Kent	3½	5	6½	15
10 Yorkshire	4	5½	5	14½
11 Essex	2½	5	4½	12
12 Hertfordshire	3½	2	5½	11
13 Northamptonshire	3	4	3	10
14 Manchester	2	4	1½	7½

League results

Division 1

Gambit 1 – Newark 1				
1 Barnes, M.	(186)	1	– 0	Wells, D. (167)
2 Swain, J.	(170)	1	– 0	Ladds, G. (154)
3 Hayward, B.	(148)	0	– 1	Blake, R. (137)
4 Hunter, S.	(139)	0	– 1	Combie, A. (139)
5 Roper, K.	(143)	0	– 1	Wollerton, G. (123)
2 – 3				

Division 2

West Nottingham 2 – Long Eaton				
1 Kingston, I.	(143)	0	– 1	Evans, R. (181)
2 Keetley, M.	(136)	1	– 0	Lakhani, K. (166)
3 Collins, J.	(130)	0	– 1	Robins, A. (146)
4 Day, J.	(119)	½	– ½	Gibson, G. T. (144)
5 Burley, P.	(116)	½	– ½	Lakhani, A. (116)
2 – 3				

Ian Kingston: West Nottingham 2 made a big effort to upset Long Eaton and give their first team a realistic shot at the Division 2 title, and at one stage, following Michael Keetley's demolition of Kishan Lakhani, a win looked more likely than not. But Jonathan let a win slip away and John and I both drifted into positions that we couldn't hold.

Division 3

Newark 2 – Bunkers 2				
1 Combie, A.	(139)	1	– 0	Harvey, K. (142)
2 Wollerton, G.	(123)	0	– 1	Lyons, S. (–)
3 Myers, R.	(115)	1	– 0	Allen, P. (95)
4 Harper, G.	(83)	1	– 0	Parham, S. (59)
5 Clurrow, G.	(–)	1	– 0	Default (–)
4 – 1				

Bunkers 2 – Mansfield 2				
1 Harvey, K.	(142)	0	– 1	Wagenbach, J. (132)
2 Radford, M.	(120)	½	– ½	Oldham, B. (130)
3 Lyons, S.	(–)	½	– ½	Smith, V. (114)
4 Moore, M.	(104)	½	– ½	Harrison, R. (99)
5 Allen, P.	(95)	1	– 0	Walker, R. (104)
2½ – 2½				

Division 4

West Nottingham 4 – Gambit 4				
1 Williamson, E.	(114)	1	– 0	Harper, M. (109)
2 Lim, E.	(74)	1	– 0	Hobson, B. (99)
3 Berdunov, N.	(–)	1	– 0	Fillingham, I. (94)
4 Thacker, S.	(105)	0	– 1	Padvis, D. (100)
5 Crawley, J.	(67)	0	– 1	Gretton, M. (89)
3 – 2				

Radcliffe & Bingham 2 – West Bridgford 2				
1 Nailard, M.	(106)	1	– 0	Hill, F. (102)
2 Redburn, B.	(95)	0	– 1	Milford, M. (69)
3 Morrell, L.	(88)	½	– ½	Godfrey, R. (–)
4 Falgate, M.	(74)	0	– 1	Gold, D. (–)
5 Fowler, S.	(–)	0	– 1	Garnett, R. (–)
1½ – 3½				

Division 5

Grantham 2 – West Nottingham 6				
1 Smith, B.	(77)	1	– 0	Maharajan, V. (–)
2 Allgood, R.	(85)	1	– 0	Ford, C. (–)
3 Cragg, N.	(–)	0	– 1	Maharajan, S. (–)
4 Cumbers, C.	(76)	1	– 0	Default (–)
3 – 1				

Gambit 5 – West Nottingham 7									
1	Heath, K.	(55)	1	–	0	Maini, A.	(0)		
2	Watson, R.	(68)	0	–	1	Gupta, Y.	(10)		
3	Mosley, S.	(35)	½	–	½	Ford, C.	(–)		
4	Ali, H.	(77)	1	–	0	Ford, S.	(–)		
2½ – 1½									
Grantham 2 – West Nottingham 5									
1	Smith, B.	()	½	–	½	Heining, D.	(109)		
2	Cumbers, C.	(76)	0	–	1	Zhang, M.	(78)		
3	Allgood, R.	(85)	1	–	0	Clegg, T.	(58)		
4	Neumann, P.	(–)	0	–	1	Mackay, R.	(–)		
1½ – 2½									

League tables

All promotion and relegation indications are provisional.

Division 1

Team	P	W	D	L	F	A	Df	Pn	Pt
1 University 2	12	9	1	2	39½	20½	19	0	19
2 Ashfield 1	12	7	2	3	34	26	8	0	16
3 West Bridgford 1	11	6	3	2	32	23	9	0	15
4 Mansfield 1	11	4	3	4	28½	26½	2	0	11
5 Gambit 1	12	4	3	5	30½	29½	1	0	11
6 University 1	13	5	1	7	30	35	–5	0	11
7 Newark 1	12	3	2	7	24½	35½	–11	0	8
8 †Bunkers 1	13	2	1	10	21	44	–23	0	5

Division 2

Team	P	W	D	L	F	A	Df	Pn	Pt
1 †Long Eaton	13	11	1	1	44½	20½	24	0	23
2 †West Nottingham 1	13	11	0	2	43½	21½	22	0	22
3 Gambit 2	12	6	1	5	34	26	8	0	13
4 West Nottingham 2	13	6	1	6	34	31	3	0	13
5 Ashfield 2	12	4	2	6	27	33	–6	0	10
6 Nomads 1	12	4	1	7	27	33	–6	0	9
7 Grantham 1	12	3	1	8	21	39	–18	0	7
8 †Ashfield 3	13	1	1	11	19	46	–27	0	3

Division 3

Team	P	W	D	L	F	A	Df	Pn	Pt
1 Radcliffe & Bingham 1	11	8	0	3	31	24	7	0	16
2 Mansfield 2	11	6	2	3	32½	22½	10	0	14
3 West Nottingham 3	11	5	2	4	29	26	3	0	12
4 Newark 2	10	5	1	4	30	20	10	0	11
5 Fiveways	11	5	1	5	25½	29½	–4	0	11
6 Nomads 2	10	3	2	5	22	28	–6	0	8
7 Bunkers 2	11	3	2	6	21	34	–13	0	8
8 Gambit 3	11	2	2	7	24	31	–7	0	6

Division 4

West Nottingham 4's win over Gambit 4 sees University 3 guaranteed a promotion slot.

Team	P	W	D	L	F	A	Df	Pn	Pt
1 †University 3	13	9	2	2	41	24	17	0	20
2 West Nottingham 4	13	8	3	2	39½	25½	14	0	19
3 Gambit 4	12	6	3	3	32½	27½	5	0	15
4 Nomads 3	11	6	1	4	32	23	9	0	13
5 Ashfield 4	12	5	3	4	32	28	4	0	13
6 Radcliffe & Bingham 2	12	3	2	7	26	34	–8	0	8
7 Ashfield 5	11	1	2	8	17½	37½	–20	0	4
8 West Bridgford 2	12	1	2	9	19½	40½	–21	0	4

Division 5

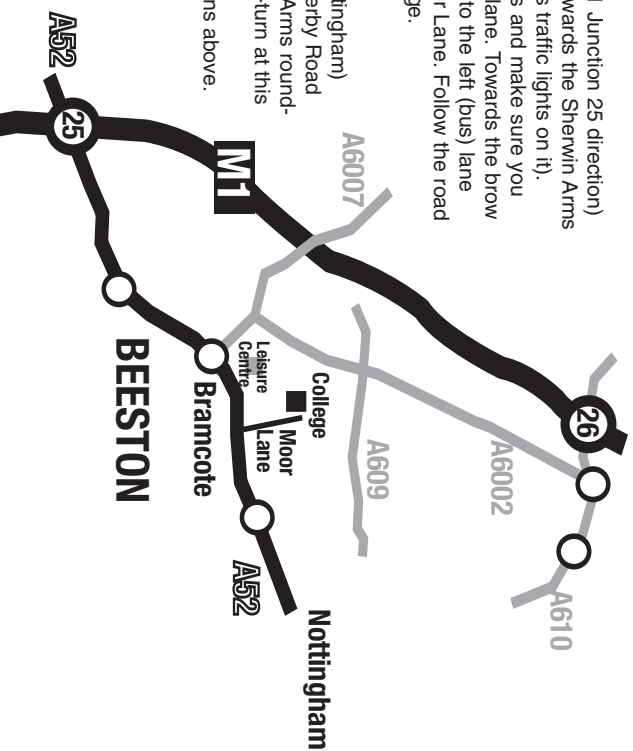
West Nottingham 5's points difference following their win over Grantham 2 means that Gambit 5 can no longer push them out of the promotion places.

Team	P	W	D	L	F	A	Df	Pn	Pt
1 †West Nottingham 5	11	7	2	2	31	13	18	0	16
2 Grantham 2	10	6	2	2	26	14	12	0	14
3 Gambit 5	10	4	4	2	20	20	0	0	12
4 Bunkers 3	11	4	4	3	21½	22½	–1	0	12
5 University 4	12	4	2	6	22	26	–4	–2	8
6 West Nottingham 7	11	3	1	7	17	27	–10	0	7
7 West Nottingham 6	11	2	1	8	14½	29½	–15	0	5

How To Find Us

From the A52 (M1 Junction 25 direction)
Follow the A52 towards the Sherwin Arms
roundabout (it has traffic lights on it).

Go straight across and make sure you
are in the middle lane. Towards the brow
of the hill move into the left (bus) lane
and turn into Moor Lane. Follow the road
down to the college.



From the A52
(coming from Nottingham)
Follow the A52 Derby Road
until the Sherwin Arms round-
about. Do a full u-turn at this
roundabout and
follow the directions above.

A bookstall will be provided by

CHESS DÅRECT Ltd.

P.O. Box 18, Mexborough, South Yorkshire, S64 9AR

Telephone: (01709) - 890 565

All equipment used at the congress will be provided by

CHESS DÅRECT Ltd.



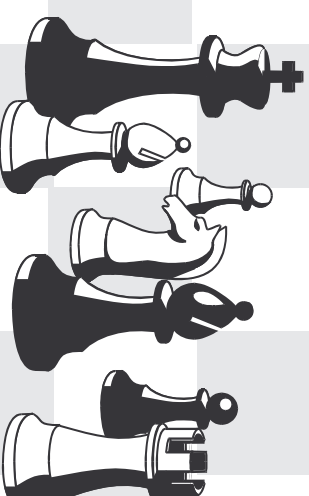
A 2007 ENGLISH CHESS FEDERATION

GRAND PRIX EVENT

NOTES FOR COMPETITORS

- No Smoking is permitted in the playing areas.
- Ungraded players must give full information regarding their playing ability, including previous results and any grading previously held. Failure to do so may render a player ineligible for a prize. The current ECF grading list has precedence over all other lists.
- Prize money will be shared in the event of a tie.
- Only players who have never had a published grade will be eligible for the ungraded prize.

The 32nd Annual NOTTINGHAM CHESS CONGRESS



PART OF THE ECF GRAND PRIX

**BRAMCOTE HILLS SPORT AND COMMUNITY COLLEGE
MOOR LANE, BRAMCOTE, NOTTINGHAM NG9 3GA**

21st - 22nd April 2007

Open 1st prize - £300
Major 1st prize - £250
Minor 1st prize - £200

Congress Director - ROBERT RICHMOND • Chief Arbiter - NEIL GRAHAM

A 2007 BRITISH CHAMPIONSHIP QUALIFYING EVENT

Printing By: PLUS PRINT Long Eaton Tel: 0115 946 1233

SCHEDULE OF EVENTS

The Congress will be formally opened at
9.15am on Saturday 21st April 2007

PLAYING SESSIONS

Round	Day	Open / Major / Minor
1	Saturday	9.30am - 1.00pm
2	Saturday	2.00pm - 5.30pm
3	Saturday	6.30pm - 10.00pm
4	Sunday	9.30am - 1.00pm
5	Sunday	2.00pm - 5.30pm

RATES OF PLAY

36 moves in 90mins + 15mins accelerated finish

THE OPEN

Open to all players

1st prize **£300** 2nd **£150** 3rd **£100**

ENTRY FEES £20

JUNIORS £16

THE MAJOR

Open to players graded below 160

1st prize **£250** 2nd **£120** 3rd **£80**

ENTRY FEES £18

JUNIORS £14

THE MINOR

Open to players graded below 120

1st prize **£200** 2nd **£80** 3rd **£50**

ENTRY FEES £16

JUNIORS £12

The highest placed Midlands player in the Open section not already qualified will be awarded a place in the 2007 British Championship

Note: prizes will be added if entries permit.

All entry fees include 'game fee'. Juniors must be under 18yrs of age on 1st September 2006.

Please return the completed form to: the Congress Secretary

Mr.R.J.Richmond

25 Wilford Lane

West Bridgford

Nottingham

NG2 7QZ

(0115) 945 5908

The right to refuse or transfer entries without giving reason is reserved.



ENTRY FORM

(Please complete in BLOCK CAPITALS)

NAME:

ADDRESS:

E-mail: Tel. No:

DATE OF BIRTH:

E.C.F. DIRECT MEMBERS NUMBER:

My Grade is: Club:

I would like a half point bye in round (one of rounds one to three only)

I declare that I am eligible to compete in and wish to enter the

..... **tournament** **signed**

ECF Direct members may deduct £1.50 £ P

My enclosed entry fee :

£5 late entry fee (Post marked after 14-4-07) :

Donation (THANK YOU) :

TOTAL :

Please make all cheques payable to NOTTINGHAMSHIRE CHESS ASSOCIATION.

Tick and enclose s.a.e. if accommodation list required

☐